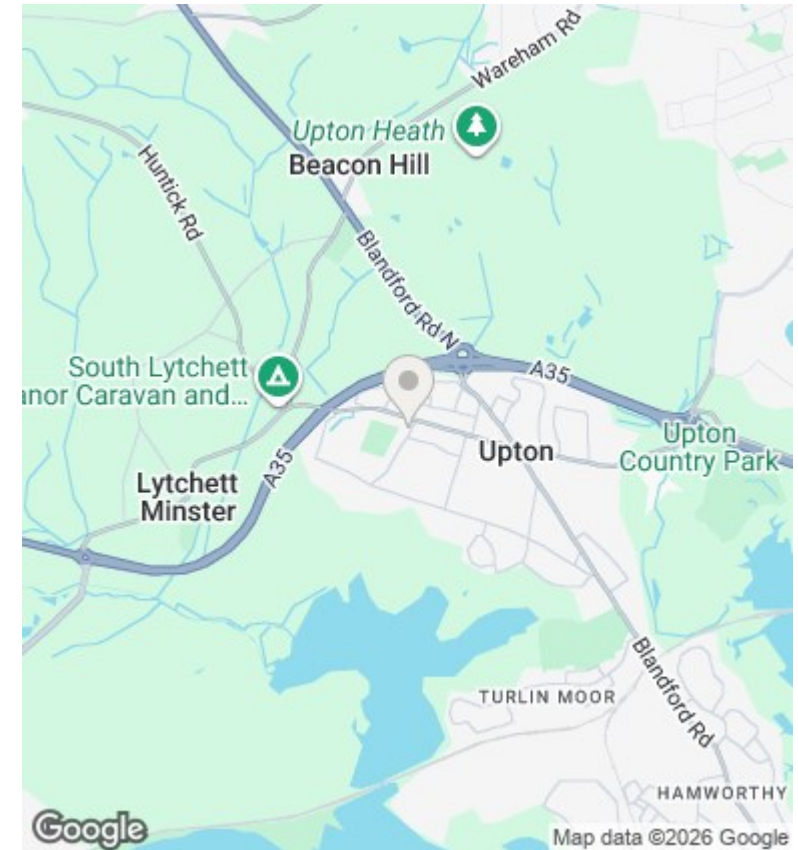
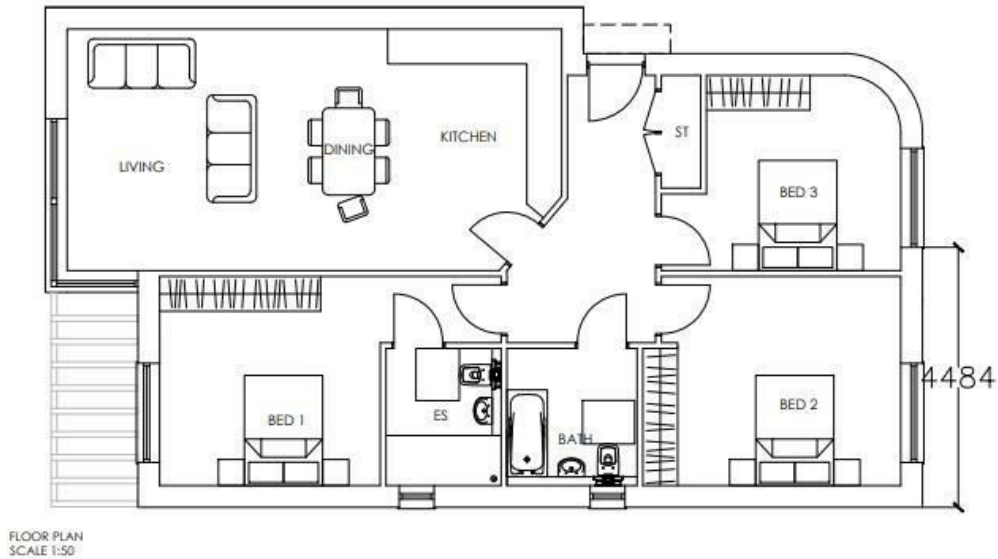




Plot@ 1 Sea View Road, Upton, Poole, Dorset, BH16 5NF

£125,000

- Planning Granted
- 1108 sq Feet/103 sq meters
- Quality Local Schooling
- Two Parking Spaces
- Plot of Land For Sale
- Build Your Dream Home
- Rare Opportunity
- Three Bedroom Unique Bungalow
- Popular Location
- Westerly Facing Garden



Directions

Viewings

Viewings by arrangement only. Call 01202 622101 to make an appointment.

Council Tax Band

EPC Rating:

Energy Efficiency Rating		Current	Potential
<i>Very energy efficient - lower running costs</i>			
(92 plus) A			
(81-91) B			
(69-80) C			
(55-68) D			
(39-54) E			
(21-38) F			
(1-20) G			
<i>Not energy efficient - higher running costs</i>			
England & Wales		EU Directive 2002/91/EC	